

ANNUAL REPORT



2025 Fiscal Year
July 2024 - June 2025

Find Community.
Be Yourself.

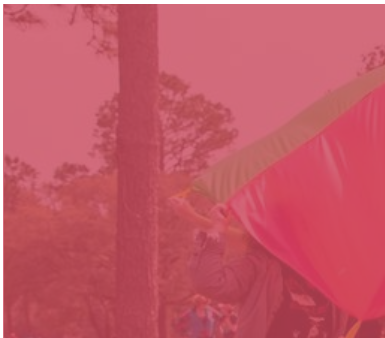
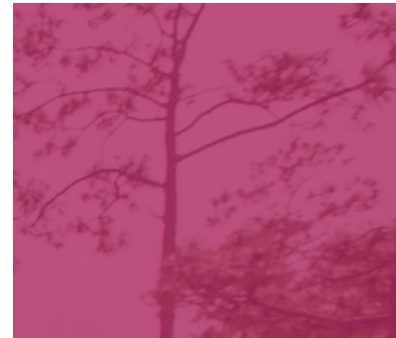


Table of Contents



03

Letter from our Director

04

Mission & Purpose

05

Impact & Community

06

Overview of Core Programs

07

Overview of Events

08

Community & Advocacy

09

Youth Leadership Initiative



10

Innovation & Leadership

11

Financial Statements

12

Financial Statements, Cont.

13

Giving Program

14

Board of Directors

15

Contact Information

Letter from our Director

One of my favorite things about Prism is its deep commitment to a cooperative ethos. It's woven into the organization's DNA—from the non-hierarchical board structure outlined in our bylaws, to our 360-degree evaluation process, to our values statement, which affirms that we use "us" language to talk about our accomplishments. At Prism, everyone's voice matters—not just those of the board and staff, but also young people, parents, volunteers, and supporters. In a corporate landscape that glorifies competition, we choose collaboration. In a culture that prizes individualism and celebrity, we choose community.

I believe wholeheartedly that Prism's community-centered culture is the reason for its growth, resilience, and momentum.

Last year, building on that momentum, we began looking at properties with the dream of launching the first-ever LGBTQ+ Youth Center in our region of the Gulf Coast. A dedicated building would supercharge our work, allowing us to offer in-house clinical services and build long-term sustainability. We were on the verge of making a purchase.

Then the cultural climate shifted. Federal funding for LGBTQ+ programs was frozen, corporate sponsors pulled back, and anti-LGBTQ+ legislation intensified. It became clear that launching a capital campaign in this environment could put the entire organization at risk. With heavy hearts, the board and staff chose to pause the youth center project.

In the wake of that decision, we regrouped and recommitted to what has always made Prism strong: the community. We expanded our programs, launched new events like Prism at the Park and Prism Creates, and doubled down on coalition-building. Our two newest initiatives—the Affirming Spiritual Communities Coalition (ASCC) and the Prism Local Affirming Network (PLAN)—are already growing fast. Over 15 affirming spiritual communities have joined ASCC, many of whom marched under a shared banner at Pride Artwalk this year, making local history.

Despite the headwinds, Prism continues to grow, adapt, and serve. We've hit every major fundraising target we set this past year, not because of big donors or flashy campaigns—but because this community shows up.

We don't need heroes if we have each other.

Thank you for being on this journey with us.

Corey Harvard

Prism United Executive Director



We don't need
heroes if we have
each other.



— Corey Harvard



Our Mission & Purpose

MISSION

Prism United responds to the comprehensive needs of LGBTQ+ youth in southwest Alabama. Specifically, Prism works to mitigate the psychological, socio-economic, and academic disadvantages caused by repression and victimization.

CHANGING THE REALITY

In Southwest Alabama, LGBTQ+ youth are too often met with rejection, discrimination, and a lack of affirming resources. These barriers isolate them and jeopardize their health, stability, and future.

Prism exists to change that reality. Our mission is three-fold: to nurture the mental health of LGBTQ+ youth, to strengthen their social and economic stability, and to help them succeed in school. Each of these areas is deeply connected. When a young person's mental health is supported, they are better equipped to handle life's challenges. When they have stable social and economic resources, they are less vulnerable to the harm caused by rejection or discrimination. And when they feel safe and supported at school, they can focus on learning and reaching their full potential.

This work matters now more than ever. Prism provides a lifeline, meeting youth where they are with care, creativity, and community. By addressing immediate needs and building pathways toward long-term resilience, Prism ensures that LGBTQ+ youth are not just surviving, but finding the confidence and joy to flourish.



[Prism has] given me hope and a chance to feel loved and accepted during a time in history that feels dark and uncertain.



— Prism Youth

Impact & Community

Over the past year, Prism has remained a lifeline for LGBTQ+ youth and families in Southwest Alabama. Through Prism Teens, Prism Preteens, and Prism Families, our programs welcomed a total attendance of 772, creating spaces where young people and their loved ones could connect, share, and grow. What happens in these spaces is powerful: isolation gives way to friendship, and fear is replaced with resilience. Surveys back this up—most youth leave feeling lighter, happier, and more hopeful than when they arrived.

That same sense of belonging shone through in our larger community celebrations. In 2025, 81 young people danced the night away at Prism Prom, a celebration created just for them to feel safe, seen, and celebrated. Flagship events like Bent Broadway and Wig Walk brought in more than 800 community members, filling theaters, streets, and gathering spaces with laughter, pride, and purpose.

The numbers capture the scale of our work, but the deeper story is about community. Every gathering, every event, every partnership is proof to LGBTQ+ youth in Southwest Alabama that they belong, they matter, and they are never alone.



772

total attendances
across our core programs

81

LGBTQ+ youth
celebrated at Prism Prom

800+

community members
at our flagship events

Overview of Core Programs

PRISM TEENS *4 out of 5 youth leave these gatherings feeling happier and less depressed.*

Prism Teens continues to be a steady source of resilience and joy for LGBTQ+ youth. Surveys show that nearly 4 out of 5 participants leave gatherings feeling happier and less depressed, while 7 in 10 feel more content and less anxious, with many also reporting less anger and numbness. Youth consistently describe finding belonging, expressing themselves creatively, building confidence, and engaging in meaningful conversations, demonstrating that Prism Teens is not just a momentary spark, but a sustained community where young people can thrive.

PRISM PRETEENS *Youth gained confidence, built friendships, and found their voices.*

Prism Preteens offers LGBTQ+ youth a space where play and self-expression spark real growth. Facilitators consistently tracked how quieter participants grew more confident across sessions, forming genuine friendships through activities like community puzzles, affirmation webs, and team-based games. By spring, these observations showed a clear shift: youth were moving beyond laughter and play into deeper conversations, reflecting openly on identity, community, and resilience. Preteens has proven to be both a space for fun and a supportive environment where young people practice communication skills and begin to find their voices.

PRISM PARENTS *Parents refer to these gatherings as their only safe space.*

Prism Parents (formerly Prism Families) has become a lifeline for caregivers of LGBTQ+ youth. Parents describe it as one of the few places where they feel truly safe. Each session blends practical skill-building—such as navigating unsupportive relatives or practicing self-compassion—with open, peer-led sharing. Facilitators note the deep sense of connection and relief participants express, as parents consistently leave with new tools, greater confidence, and the strength that comes from being part of a supportive community they can relate to.



I have felt much more confident in myself. The meetings and events have helped me with my anxiety, and I am much less anxious when going out.



— Prism Youth

Overview of Events



WIG WALK

In its second year, Wig Walk made an even bigger splash by raising over \$30,000 to fuel Prism United's mission. The event brought together 114 ticket holders, 19 fundraising teams contributing \$20,855, and \$4,050 from generous sponsors, securing its place as one of Prism's largest fundraisers. Wig Walk 2024 wasn't just a continuation of last year, it was a leap forward to show how joy and visibility can rally a community and spark lasting change.



PRISM PROM

Prism Prom 2025 gave LGBTQ+ teens a night to remember, welcoming 81 youth attendees for a celebration created entirely for them to feel safe, seen, and celebrated. The evening was made possible thanks to the generosity of 21 sponsors and 29 individual donors, whose support ensured every detail was filled with joy and affirmation. More than just a dance, Prism Prom continues to be a powerful reminder that every young person deserves a space to be themselves, surrounded by community and love.



BENT BROADWAY

Bent Broadway 2025 brought the house down with three nights of laughter, music, and unapologetic camp, raising \$27,508 for Prism United. The show drew in 379 audience members, with ticket sales topping \$13,530 (a 30% increase from 2024) and was powered by the generosity of 13 community sponsors. More than a fundraiser, Bent Broadway has become a stage where joy meets resistance, using the magic of theater to celebrate queer creativity and rally support for LGBTQ+ youth.

Community & Advocacy



PRISM CHANGEMAKER AWARD

This year's Prism Changemaker Award was presented to Lydia Shantazio, a National Board Certified teacher at Davidson High School whose 18 years of service have left an indelible mark on her students and community.

As GSA sponsor, she has created a safe haven for LGBTQ+ youth and partnered with Prism to secure a \$10,000 It Gets Better grant, expanding access to queer literature for students and families. Lydia's unwavering dedication, both inside and beyond the classroom, continues to inspire and empower the next generation.

PRISM GUARDIAN AWARD

Prism honored Denny Ham with the 2024 Prism Guardian Award for his advocacy as a father and ally. Since his family first joined Prism in 2019, Denny has become a vital part of our community, supporting Prism Families as a facilitator, greeting new parents with warmth, and offering steady encouragement to program leaders.

Beyond his role in our groups, Denny's fierce love for his children and outspoken support for LGBTQ+ youth reflect the very heart of this award. His presence continues to strengthen Prism's mission of building safe, affirming spaces for young people and their families.

PRISM FAMILIES IN FOCUS

Prism's community events have long been a favorite way for LGBTQ+ youth and families to connect, relax, and celebrate together. Gatherings like Prism in the Park, Prism Goes Bowling, and Prism Movie Day have served as Prism Socials, casual opportunities for people to show up, be themselves, and enjoy time with one another. What started as simple social gatherings is now growing into something bigger: a formal program for Prism Families.

This year, Prism in the Park drew more than 130 participants for a relaxed afternoon of connection and fun. Families and friends picnicked together, played field games, and enjoyed live music under clear skies. Nearly 50 people joined Prism Goes Bowling, where strikes, gutter balls, and plenty of laughter created a warm, welcoming space. Even smaller gatherings like Prism Movie Day have provided meaningful chances to build connections across ages and experiences.

As Prism transitions from one-off Socials into a structured program for rainbow families, these events remain at the heart of our vision. They demonstrate that community building doesn't have to be complicated. Sometimes the most powerful impact comes from simply creating spaces where people can gather, belong, and experience joy together.

Youth Leadership Initiative



In January 2025, Prism launched the pilot cohort of the Prism Leadership Initiative, a program designed to cultivate the next generation of LGBTQ+ leaders. Over the course of the semester, participants built leadership skills while working on projects rooted in advocacy, creativity, and community building. Youth documented queer histories by interviewing elders, produced a promotional zine, volunteered at outreach events, and helped coordinate the creation of Little Free Libraries at their school GSA.

The impact of this first cohort was clear. 100% of participants reported making meaningful new connections, and a majority reported feeling more confident in both school settings and group leadership roles. Beyond the numbers, their reflections reveal growth not only in skills but also in a deep sense of belonging, with one youth sharing: "I will always have a home at Prism."

Students also reflected on lessons learned, from building community and learning to gather teams, to recognizing the power of allies and the responsibility of advocacy in the South. As one participant shared, the program allowed them to see just how many allies exist, many simply need encouragement to speak out.

With this foundation, the Leadership Initiative will expand in future cohorts, continuing to empower youth to lead with courage, creativity, and compassion.



I will always have a home at Prism.



— Prism Leadership Initiative Participant

Innovation & Leadership



LEADING WITH BELONGING

Prism launched the Affirming Spiritual Communities Coalition (ASCC) to unite congregations in southwest Alabama committed to supporting LGBTQ+ youth and families. For their first gathering, these faith communities came together to march in Pride ArtWalk, making their visible support clear to all. With 15 congregations already engaged, ASCC is building a directory of affirming spaces, hosting learning sessions, and creating opportunities for fellowship, ensuring that faith can be a source of belonging, not rejection.



CONNECTING WITH LOCAL LEADERS

During Pride Month, Prism continued building bridges with local leadership by hosting U.S. Rep. Shomari Figures for a listening session with our team. These conversations are vital to ensuring LGBTQ+ youth and families are heard at every level of representation. By engaging directly with leaders, Prism is helping shape a more compassionate, inclusive future for our community.



TRAILBLAZER INITIATIVE LAUNCH

Come Out Mobile 2024 spotlighted our community's resilience through the Trailblazer Initiative. Prism produced high-quality short-form videos capturing the stories of impactful LGBTQ+ leaders across southwest Alabama. These stories were shared in the weeks leading up to the gala and honored on stage, turning celebration into advocacy. Prism will continue producing this series annually, building an archive that preserves local LGBTQ+ history and uplifts the voices that shape our community.

Financial Statements

INCOME

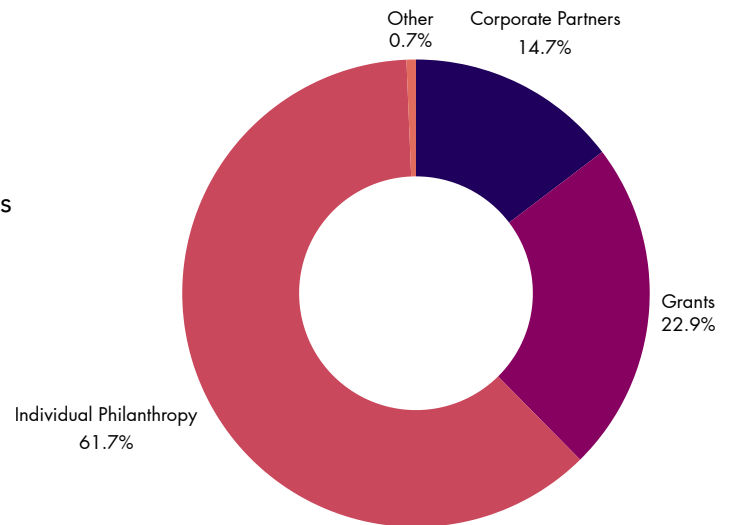
Compared to last year, this marks a 57% increase in overall income. The growth highlights both the expansion of our donor community and the deepening trust of corporate and grant partners. This was also our first year implementing accrual accounting, a milestone that has provided a clearer, more grounded view of Prism's funding landscape—one that highlights a trajectory of strength and sustainability.

Corporate Partners: \$41,576.86

Grants: \$65,004.01

Individual Philanthropy: \$174,956.61

Other Income: \$1,849.93



TOTAL : \$283,387.41

EXPENSES

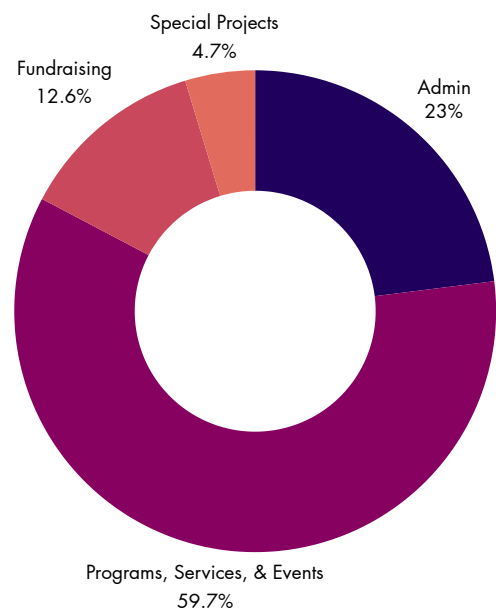
With total expenses of \$258,773.12, Prism United invested the largest share—over \$154,000—into core programs that provide LGBTQ+ youth and families with vital support and community. Special projects like the Southwest Alabama Inclusion Project expanded our reach, while lean administrative and fundraising costs sustained the infrastructure behind our mission. These expenses reflect our dedication to both immediate impact and long-term growth.

Admin: \$59,546.23

Programs: \$154,495.93

Fundraising: \$32,587.35

Special Projects: \$12,143.61



TOTAL : \$258,773.12

Financial Statements, Cont.

MAJOR GRANT AWARDS

\$50,000: CCBI GRANT

For the second year in a row, Prism United received CenterLink's Capacity Building Initiative grant. This year's support has focused on strategic planning, staff training, and building long-term sustainability. We are currently developing a comprehensive three-year plan, with the goal of releasing it in early 2026 to guide Prism's continued growth and impact for LGBTQ+ youth and families across southwest Alabama.

We are deeply grateful to CenterLink for their continued leadership in connecting and guiding centers like ours. Their partnership has been invaluable to our growth and development.



\$10,000: IT GETS BETTER GRANT

Through the It Gets Better: 50 States. 50 Grants. 5000 Voices. Project, Prism United partnered with Davidson High School's GSA to launch *Pride Pages*, a student-led initiative to expand access to affirming literature. Students created a club library, distributed more than 100 books at Prism Prom and the Open Book storytelling event, and built three hand-painted Little Free Libraries to share inclusive stories with the community.

By leading every stage of the project, students not only increased access to diverse voices but also built visibility, belonging, and resilience for youth across Mobile.



Giving Program

Prism's giving community continues to be the backbone of our work. Through our Sustaining Membership Program, we now raise nearly \$3,800 every month from more than 60 active members contributing between \$10 and \$500 each month. This broad base of support fuels our programs and affirms that every gift, no matter the size, makes a difference.

This year, we expanded our giving opportunities by introducing tribute and memorial gifts, offering donors a meaningful way to honor loved ones while directly supporting LGBTQ+ youth and families.



\$45,000 per year

given by 60+ sustaining members who believe
in Prism's mission

We also launched the Prism Local Affirming Network (PLAN), a partnership initiative connecting affirming businesses, organizations, and congregations to Prism's mission. For an annual membership, PLAN partners receive recognition as affirming spaces, access to training and resources, and increased visibility through Prism's communications. More importantly, they become part of a growing network committed to making southwest Alabama safer and more inclusive.



Board of Directors



**AIMEE
CLIFFORD**

(she/her)
Records Officer



**ANTONIO
BRITO**

(he/him)
Member



**ARIEL
CHAVEZ**

(he/him)
Member



**CHENELE
CHAPMAN**

(she/her)
Administrative Officer



**DAN VAN
NOSTRAND**

(he/him)
Coordinating Officer



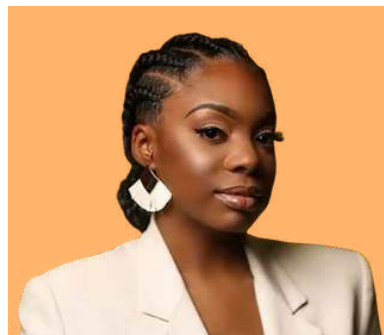
**JESSE HARDIN
HUFSTEDLER**

(he/him)
Member



**KRISTON
SIEBER**

(she/her)
Finance Officer



**LOREN
MODISA**

(she/her)
Member



Contact Us



info@prismunited.org



(251) 219-8441



www.prismunited.org



Prism helps me
stay hopeful about the future.



— Prism Youth